



## Peripheral Filter

### Main Features

- Improve image contrast
- No image overexpose
- Easy handling and cleaning

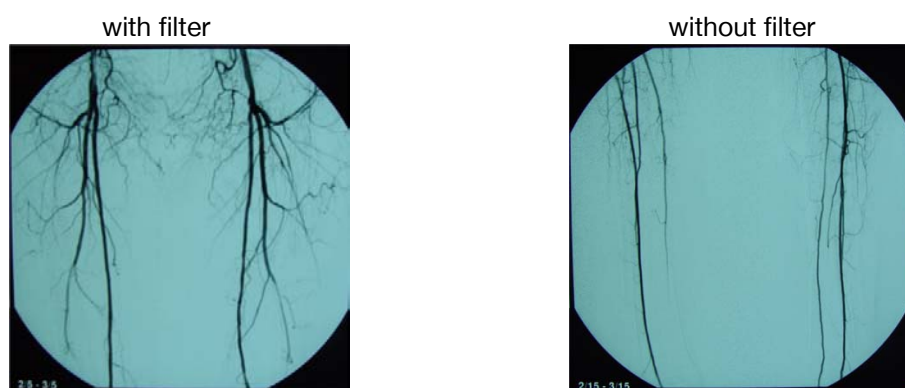
## Product Description

The absorbed dose necessary to obtain a medical X-ray image with sufficient signal-to-noise ratio varies with object composition, thickness, and X-ray energy spectrum.

The positive effects of energy filtering to optimize the spectrum were observed already at the advent of medical X-ray imaging.

It was noted that putting a thin layer of material, such as a piece of silicon copper, the X-ray medical image will be drastically improved.

Absorption filtering is still the dominant method to filter out low-energy photons, often in combination with a limited X-ray tube acceleration voltage to cut off photons of higher energy.



## Technical Features

### PERIPHERAL FILTER SET:

- Contains 3 different filter
- 2x Outer filter and 1x Central filter
- Dimensions / weight of each filter:
- Dimension 100 x 15 x 4 cm
- Weight 3,4 kg
- Material Silicon copper