



X-Filter

Peripheral Filters

Main Features

- Improve image contrast
- No image overexpose
- Easy handling and cleaning

Product Description

The absorbed dose necessary to obtain a medical X-ray image with sufficient signal-to-noise ratio varies with object composition, thickness, and X-ray energy spectrum.

The positive effects of energy filtering to optimize the spectrum were observed already at the advent of medical X-ray imaging.

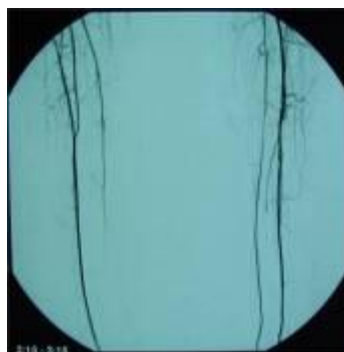
It was noted that putting a thin layer of material, such as a piece of silicon copper, drastically improves the X-ray medical image.

Absorption filtering is still the dominant method to filter out low-energy photons, often in combination with a limited X-ray tube acceleration voltage to cut off photons of higher energy.

With filter



Without filter



Peripheral Filter Set

- Contains 3 different filters: 2x outer filter and 1x central filter

Specification

Dimension	100 x 15 x 4 cm
Weight	3,4 kg
Material	Silicon copper